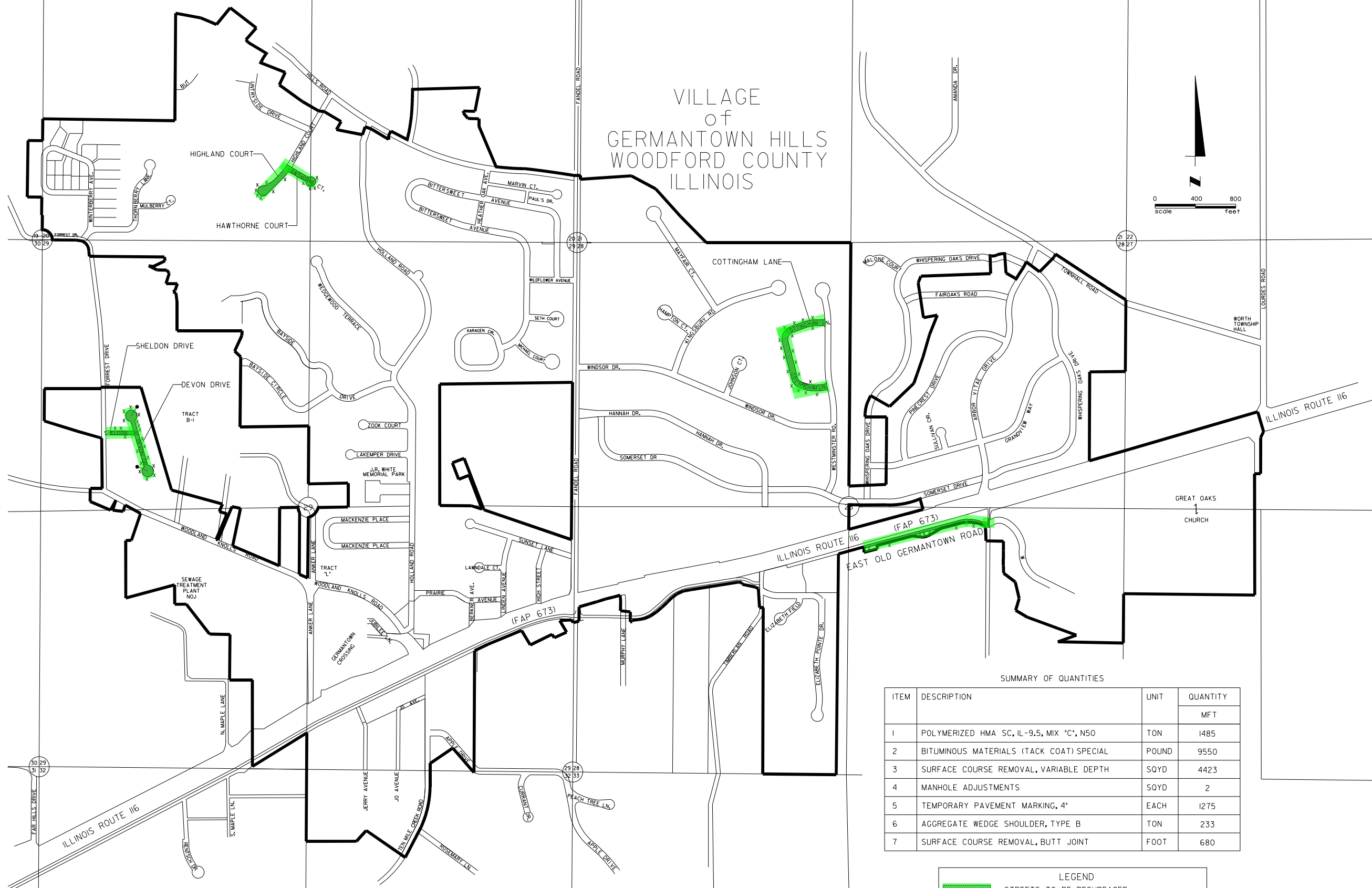
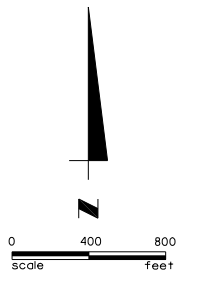


VILLAGE
of
GERMANTOWN HILLS
WOODFORD COUNTY
ILLINOIS



SUMMARY OF QUANTITIES

ITEM	DESCRIPTION	UNIT	QUANTITY
			MFT
1	POLYMERIZED HMA SC, IL-9.5, MIX "C", N50	TON	1485
2	BITUMINOUS MATERIALS (TACK COAT) SPECIAL	POUND	9550
3	SURFACE COURSE REMOVAL, VARIABLE DEPTH	SOYD	4423
4	MANHOLE ADJUSTMENTS	SOYD	2
5	TEMPORARY PAVEMENT MARKING, 4"	EACH	1275
6	AGGREGATE WEDGE SHOULDER, TYPE B	TON	233
7	SURFACE COURSE REMOVAL, BUTT JOINT	FOOT	680

LEGEND

- STREETS TO BE RESURFACED
- CORPORATE LIMIT LINE
- MANHOLE ADJUSTMENTS
- EXISTING DRIVEWAY LOCATIONS

NOTE:
SEE TYPICAL SECTIONS FOR ADDITIONAL DETAILS.

MODEL: L:\InRoads\1 [Sheet]
 FILE NAME: L:\GermantownHills\240066889-00_2024\MFT\6688900\CADD Data\Sheet2024.MFT Streets.dgn
 License No. 184-006613 © Copyright CMT, Inc.



USER NAME = zslachta	DESIGNED - ZMS	REVISED -
	DRAWN - ZMS	REVISED -
	CHECKED - EMM	REVISED -
PLOT DATE = 5/7/2024	DATE - MAY 2024	REVISED -

VILLAGE OF GERMANTOWN HILLS
WOODFORD COUNTY, ILLINOIS

2024 STREET MAINTENANCE PROGRAM
LOCATION MAP

SCALE: 1"=500' SHEET 1 OF 1 SHEETS STA. TO STA.

F.A.U. RTE.	SECTION	COUNTY	TOTAL SHEETS	SHEET NO.
-	24-00000-00-GM	WOODFORD	2	1
CONTRACT NO.				
ILLINOIS FED. AID PROJECT				